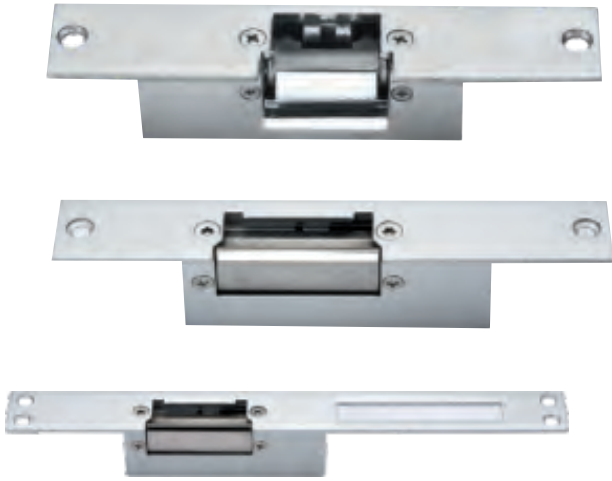


Standard Electric Strike



Features

- Aluminum, SS Bolt
- Testing to 1000000 cycles
- High-Temperature Painted
- Feature: Fail Secure
- Function: Built-out MOV
- Suitable For: Wooden Door, Metal Door & PVC Door

Specification



Model	S-ES
Lock Size	150Lx39.5Wx31H(mm)
Bolt structure	Stainless Steel
Holding Strength	800kg
Voltage	DC12V
Current	450mA
Feature	Fail Secure
Surface Temperature	Within +20°
Suitable Temperature	-10° ~ 45°
Face plate Housing	Painted Steel
Bolt Housing	Stainless steel, Draw the Polishing of silk
Function	Built-out MOV
Suitable For	Wooden Door, Metal Door, PVC Door
Opening Mode	90 Degree Swinging Door

Standard Electric Strike